

# LUDLOW PRIMARY SCHOOL



## NEWSLETTER

28.03.25



01584 873602

### Tesco Stronger Starts

For just a few more days, we will be competing for the community grant in Tesco Ludlow.

The grant will be used to help us purchase resources to create a relaxing calm space for some of our students when they need a break from the classroom environment.

Blue tokens can be claimed every time you shop, even if you pop in for a small item, such as a newspaper. Please encourage your friends and family to vote for us too. The project with the highest number of votes will receive £1500, second place - £1000 and third place - £500.

Thank you for all your support so far.

### Breakfast Club- Clee View Site

We currently have spaces for Breakfast Club at our Clee View site. Breakfast Club starts at 8:10am and there are a variety of options on offer including cereals, toast, crumpets, pancakes and yoghurts.

The cost for breakfast club is £2.50 per session (free for pupil premium eligible children)

If anyone would like to sign up, please contact the Clee View office. Please note these will be allocated on a first come, first served basis.

Ludlow Primary School 01584 873602

If you require a hard copy of this Newsletter, please contact the school office at either site, thank you.



A massive thank you to all for all of your cake donations and money donations for the non-uniform day and for the cake sale. We raised an amazing amount of £738.09.



The School Council did a great job of selling the cakes to the rest of the children and thoroughly enjoyed the experience.

A big thank you to the Year 5 School Council who counted all of the money. A job they enjoyed, and a life skill so well done.



### School Uniform

A polite reminder that trousers, skirts and pinafores should be dark grey, not black. Please also note that leggings should not be worn, as they are not part of our school uniform.

All children should wear black school shoes please, not trainers.

Thank you

Ludlow Primary School 01584 873602

If you require a hard copy of this Newsletter, please contact the school office at either site, thank you.

## Spring & Easter Menu Friday 4<sup>th</sup> April



Please book through Arbor as follows:  
For Chicken & Gravy Pie please choose Pizza Selection.  
For Quorn & Gravy Pie please choose Cheese & Vegetable Stacker.

## \*\* Parents Evening 9<sup>th</sup> and 10<sup>th</sup> April \*\*

Timeslots are now available to book on Arbor. This is under Guardian Consultations on the app.

The  
**ELSA**  
Study

NHS  
Shropshire Community Health  
NHS Trust



UNIVERSITY OF  
BIRMINGHAM



Screening children for type 1 diabetes



Would you like to get your child  
screened for type 1 diabetes in the  
ELSA diabetes research study?

We are screening children, aged 3-13 years,  
at a clinic near you:

Date: **3<sup>RD</sup> APRIL 2025**  
Time: **LUDLOW**  
Location: **PRIMARY**  
Register here: [www.elsadiabetes.nhs.uk](http://www.elsadiabetes.nhs.uk)  
Contact us: **01743 730300** ask for Sharen or Tina.

Scan for info



The ELSA study - RAS ID 309252 - ELSA Study Poster 3 - v1.0 - 26.07.23

### Contact via Dojo

If you have concerns about any incident in school which involves your child, please do not message class TAs through Dojo or by any other means. Please direct all queries to the class teacher.

Please do not message outside of normal office hours, as staff do not receive notifications in the evenings or at weekends.

Thank you

*Ludlow Primary School 01584 873602*

*If you require a hard copy of this Newsletter, please contact the school office at either site, thank you.*

## KS1 & Reception Bedtime Stories



We are holding our annual KS1 and Reception bedtime stories event at Sandpits Road on Monday 31st March. We will be reading bedtime stories followed by a hot chocolate.

Your child can come along in their pyjamas from 5 pm until 6 pm. **Please let us know if your child has any new allergies we are not aware of, prior to the event.**



We are very lucky to be hosting a book fair on both sites in partnership with Scholastic Books.

Children will have the opportunity to visit the fair during the school day and will bring home a wish list of any titles they are interested in.

The fair will be open on both sites on the following dates:

**Sandpits Road – Monday 31<sup>st</sup> March (during bedtime stories) and Tuesday 1<sup>st</sup> April**

**Clee View – Friday 28<sup>th</sup> March and Tuesday 1<sup>st</sup> April**

If you are unable to visit the book fair in person, the wish list children will be bringing home has a QR code you can scan to order books from the virtual book fair.

**Payment at the book fair will be card payments only.**



### Art Club

Art Club were invited to create some artwork for the April issue of *Local Ludlow Community Magazine*. Alannah's wonderful picture was chosen and will be published on the cover!



During club children have also decorated some Easter Eggs which we have displayed at the Clee View Site.



Cody Davies from our 6 Oak class is taking part in a 5K run to raise money for St Michael's Hospice in memory of his nan. If you would like to donate this is the justgiving page:

[https://www.justgiving.com/page/cody-davies-1?utm\\_medium=FR&utm\\_source=CL](https://www.justgiving.com/page/cody-davies-1?utm_medium=FR&utm_source=CL)

Registered charity  
number 511179



**When**  
11 May 2025 8:00 am – 13:00

**Location**  
Start: Castle Green, HR1 2NH –  
Finish: Shell Store, HR2 6SR



Sunday 11th May 2025  
**RUN Hereford: City Edition**



## St Michael's Hospice

St Michael's Hospice is an independent charity that exists to help and support patients and their families living with a terminal illness.

Cody has signed up to do a 5k run in memory of his nan who sadly lost her life at St Michael's hospice. At the age of 44 she lost her battle, like her so many families are affected. At Michael's hospice are truly amazing in the level of care and support. They provide so as a thank you I would love to raise money for her memory.

St Michael's hospice provided accommodation for her family to be able to stay close to her in her final moments. Gave great care and comfort.



### Contacting Teachers and Senior Leaders

If any parent has a concern to raise with a teacher or senior leader, we respectfully ask this is done via the school office or admin email – [admin@ludlowprimaryschool.co.uk](mailto:admin@ludlowprimaryschool.co.uk) and not Dojo or individual email addresses.

This will enable your query to be dealt with more effectively and efficiently.

Thank you

Ludlow Primary School 01584 873602

*If you require a hard copy of this Newsletter, please contact the school office at either site, thank you.*

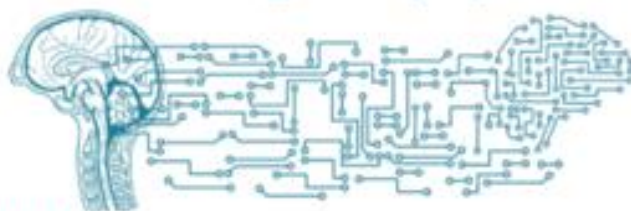
### The impact of smartphones



There is a growing concern on how excessive use of smartphones can affect our children.

In addition to the effects of seeing inappropriate content online, the risk of cyberbullying and grooming, it is important that we also highlight the effects of smartphone use on our children's mental health.

### Artificial Intelligence (AI)



#### What is AI?

AI is when a computer/machine can learn and perform tasks like a human. Its popularity continues to increase, and examples include:

- **Virtual assistants** like Alexa and Siri.
- **Chatbots** such as ChatGPT and My AI from Snapchat

### TikTok

**You must be over 13 years of age to use TikTok.** TikTok is a social media platform for sharing and watching short video clips. Some of the videos may not be appropriate for your child to view and there is also the risk of strangers contacting your child. If your child is using TikTok then make sure appropriate security/privacy settings are applied.

Please access the full newsletter here:

[online-safety-newsletter-primary-march-2025\\_pdf\\_ludlow.pdf](#)

## Online Safety Information Session



We hope those parents that joined the Online Safety Information session in January found it useful.

As promised, below is the link to the recording and presentation for anybody that wants to rewatch it or were unable to watch it live:

<https://drive.google.com/drive/folders/1BxcZWQ4XcUonNO8C1v-auZq65-AZx9gH?usp=sharing>

We have also embedded a copy of the video on our website for those who would prefer to watch it via a browser or share this link:

<https://www.knowsleyclcs.org.uk/online-safety-parent-session-jan-2025/>



### Childcare through the DFE

The DFE have launched a new site for parents to check if you are eligible for free childcare:

<https://www.gov.uk/check-eligible-free-childcare-if-youre-working>

There is also a childcare account that parents must log into every three months to ensure they get free childcare if they are working or for Tax-Free Childcare:

<https://www.gov.uk/sign-in-childcare-account>

### School Car Parks

A polite reminder about the use of school car parks.

Please do not use the car parks at Sandpits Road or Clee View to drop off or collect children, unless you have a prior arrangement with school. When collecting children from any after school club at either site, please do not drive into the car park. We request you leave your car on the road and walk to meet your child. Lots of children are leaving school at the same time and any cars moving around the car park make this dangerous for them

Please help us to keep everyone safe.

Thank you

### SEND Opportunities

Please see below some further opportunities for pupils with SEND.

Actio are excited to share their new video highlighting the All-In programme. Actio is a collaboration between Energize Shropshire, Telford & Wrekin and PACC (Shropshire's Parent Carer Forum). Actio aims to improve activity opportunities for children and young people with SEND in Shropshire. Parent Carers and All-In members are encouraged to learn how Actio can support their child's wellbeing and explore new activities. Watch the video to find out why and how you can become an All-In member. Or if you're already an All-In member, you may be surprised at how many other activities are available for your child to attend.

Please watch the new video on Actio's website here:

<https://actioconsortium.wixsite.com/website/>



Our driver Healthy Body, Healthy Mind means that one of the things that we promote is having a balanced diet, rich in essential nutrients and therefore as a school a healthy lunchbox is important to us.

#### **What should be in a healthy lunchbox?**

Eating a healthy, balanced lunch is vital for ensuring children have the right nutrients and enough energy to see them through the school day, however, achieving this balance is not always as easy as it sounds. The key to a healthy packed lunch is variety and getting the right balance of foods to provide children with all of the nutrients they need to stay healthy. A packed lunch made at home can be a healthy and delicious choice and gives a parent or carer control over the foods and ingredients included.

These should be based upon the principles of the *Eatwell Guide*, encouraging a lunchbox to contain:

- a starchy food, e.g. potatoes, bread, rice, pasta
- plenty of fruit and vegetables, e.g. carrot sticks, an apple, sliced cucumber
- a source of protein, e.g. beans, pulses, egg, fish, meat
- a healthy drink, e.g. water, semi-skimmed milk.

As a healthier lunchbox school, we suggest to parents/carers that foods high in fat, salt and sugars should not be included (such as crisps, confectionary and sugar-containing carbonated drinks).

There are lots of websites regarding lunchbox ideas and recipes. Here's a link to one of them: [Lunchbox ideas and recipes – Healthier Families - NHS](#)

### **Term Dates 2024 – 2025**

#### **2025**

Spring Term ends: Thursday 10<sup>th</sup> April 2025

PD Day: Friday 11<sup>th</sup> April 2025

Summer Term starts: Monday 28<sup>th</sup> April 2025

Bank Holiday: Monday 5<sup>th</sup> May 2025

Half Term: Monday 26<sup>th</sup> May 2025 – Friday 30<sup>th</sup> May 2025

Summer Term ends: Friday 18<sup>th</sup> July 2025

**As you will be aware, we are not able to authorise holidays in term time due to government legislation introduced in 2013. Please note that other schools in the area may be different as schools have the flexibility to plan their own PD days. This information will also be on our website.**

*Ludlow Primary School 01584 873602*

*If you require a hard copy of this Newsletter, please contact the school office at either site, thank you.*

### Dates for your Diary 2024-2025

Wednesday 2<sup>nd</sup> April - Year 1 trip to Enginuity

Tuesday 8<sup>th</sup> April- Yr 3 Local area walk and Whitcliffe

Tuesday 8<sup>th</sup> April- Yr 5/6 Tag Rugby, Church Stretton Leisure Centre

Wednesday 9<sup>th</sup> April - Reception classes to Queenswood Country Park

Wednesday 9<sup>th</sup> April - Year 6 trip to Clee Hill Quarry and Clee Hill summit

Wednesday 9<sup>th</sup> & Thursday 10<sup>th</sup> April - Parents' Evening at both sites

Thursday 10<sup>th</sup> April - Year 4 Easter Church Performance

Monday 12<sup>th</sup> May - Reception classes Height and Weight Measurement

Thursday 22<sup>nd</sup> May- Yr 3 Shropshire Discovery Centre Workshop

Thursday 22<sup>nd</sup> May- Yr 5 Trip to Hay Festival

Wednesday 11<sup>th</sup> June - Bag2School Collection

Thursday 12<sup>th</sup> June- Tempest Yr 6 Leavers group & individual photos

Tuesday 1<sup>st</sup> July- Yr 6 Induction Day Ludlow CE School

Wednesday 2nd July to Friday 4th July - Yr 6 Residential Trip to Manchester

Monday 7<sup>th</sup> July - Sea Legs Pantomime for EYFS and KS1 at Sandpits Road

Tuesday 8<sup>th</sup> or Wednesday 9<sup>th</sup> July- Yr 5 Taster Day Ludlow CE School