

LUDLOW PRIMARY SCHOOL



NEWSLETTER



14th January 2022

01584 873602

Starting School in September 2022

FOR PARENTS OF CHILDREN DUE TO START SCHOOL IN SEPTEMBER - We have been asked by Shropshire Council to share the following with you -

"The closing date for applications for Reception is fast approaching, [Saturday 15 January 2022](#).

We would therefore be grateful if you could distribute a general reminder to parents advising them that, if they have not already done so, they need to make application to their local authority for a school place before midnight on Saturday 15 January 2022. We would strongly advise parents not to leave it until the last moment. If parents do not make application by this closing date, their application would be treated as late and that could disadvantage their child when being considered for a place at their preferred school(s). Paper application forms are not available.

Applications must be made online at www.shropshire.gov.uk/schooladmissions

Anyone struggling to apply online is advised to contact Shropshire Council customer services or to attend their nearest Customer Service Point available here -

<https://www.shropshire.gov.uk/customer-services/find-a-customer-service-point/>

Parents should check opening times and availability before visiting these sites."

Our new artwork has arrived showing our Curriculum Drivers in their full glory!



Covid Guidance

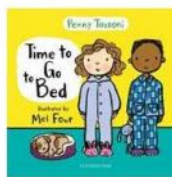
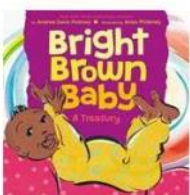
As you will no doubt be aware, the rules in relation to testing for, and recovery from Covid have changed. From 11th January, if anyone returns a positive Lateral Flow Test, but **DOES NOT HAVE** any of the 3 main symptoms, there is no requirement to have a confirmation PCR test. The three main symptoms are a **temperature; continuous cough; change or loss of sense of smell or taste**. For Track and Trace purposes, it is necessary that all positive Lateral Flow tests are reported via the Gov.uk website. When you receive a confirmation email in reply, please then forward a copy to us. Isolation can end before 10 days providing 2 Negative Lateral Flow Tests are returned 24 hours apart and currently on days 6 and 7. **This guidance is changing constantly, with a further change planned for Monday 17th January, so please keep yourself up to date.**



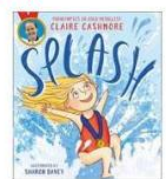
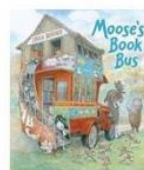
Special Lunch Menu -
Thursday 20th January.
Please book online in the usual
way by selecting Hot Meal.

Every month, Book Trust review dozens of new books for children and teenagers. Here are the ones they liked best in January: guaranteed to get your child reading -

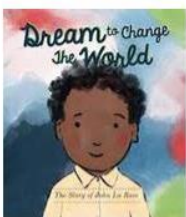
For ages 0-3 and up



For ages 4-5 and up



For ages 6-8 and up



For ages 9-11 and up



For a full list, have a look on their website -

<https://www.booktrust.org.uk/books-and-reading/our-recommendations/best-new-books/>



LUDLOW CRICKET CLUB INDOOR WINTER JUNIOR TRAINING

OPEN TO NEW AND EXISTING MEMBERS
BOYS AND GIRLS

Indoor Winter training will commence in the New Year
for our Junior Section.

Open to School Year groups 5 – 10

Advance booking required – please email
ebowencricket@gmail.com for more details and to
reserve a place.

Junior Indoor Winter
Training

Mondays

LUDLOW SCHOOL
SPORTS HALL

5.20PM – 6.20PM
YRS 5 6 7

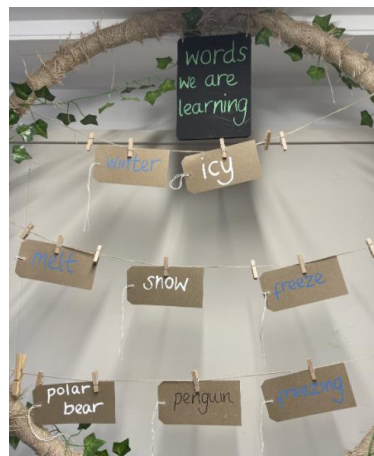
6.30PM – 7.30PM
YRS 8 9 10

2 X 6 WEEK BLOCKS

STARTING MONDAY
10TH JANUARY
£20 PER BLOCK
LIMITED SPACES
MUST BE BOOKED IN
ADVANCE

Years 5 & 6 - Limited spaces still available. Fun skills-based session for a great introduction to the game. Email for more information - ebowencricket@gmail.com

Acorns are exploring Winter over the next few weeks! Here are just a few of the activities they will be enjoying.



Dates for your diary

Monday 17th January - Y6 Group to Athletics Event in Church Stretton

Thursday 20th January - Farmhouse Breakfast Special Menu

From Thursday 20th January - Y3 swimming

Monday 7th February - Ludlow Mayor to attend KS2 Assembly

Monday 14th February - Ludlow Mayor to attend KS1 Assembly

Thursday 17th February - Break up for Half term

Friday 18th February - PD Staff - Staff Only

Monday 28th February - Return to school

Ludlow Primary School 01584 873602

If you require a hard copy of this Newsletter, please contact the school office at either site, thank you.