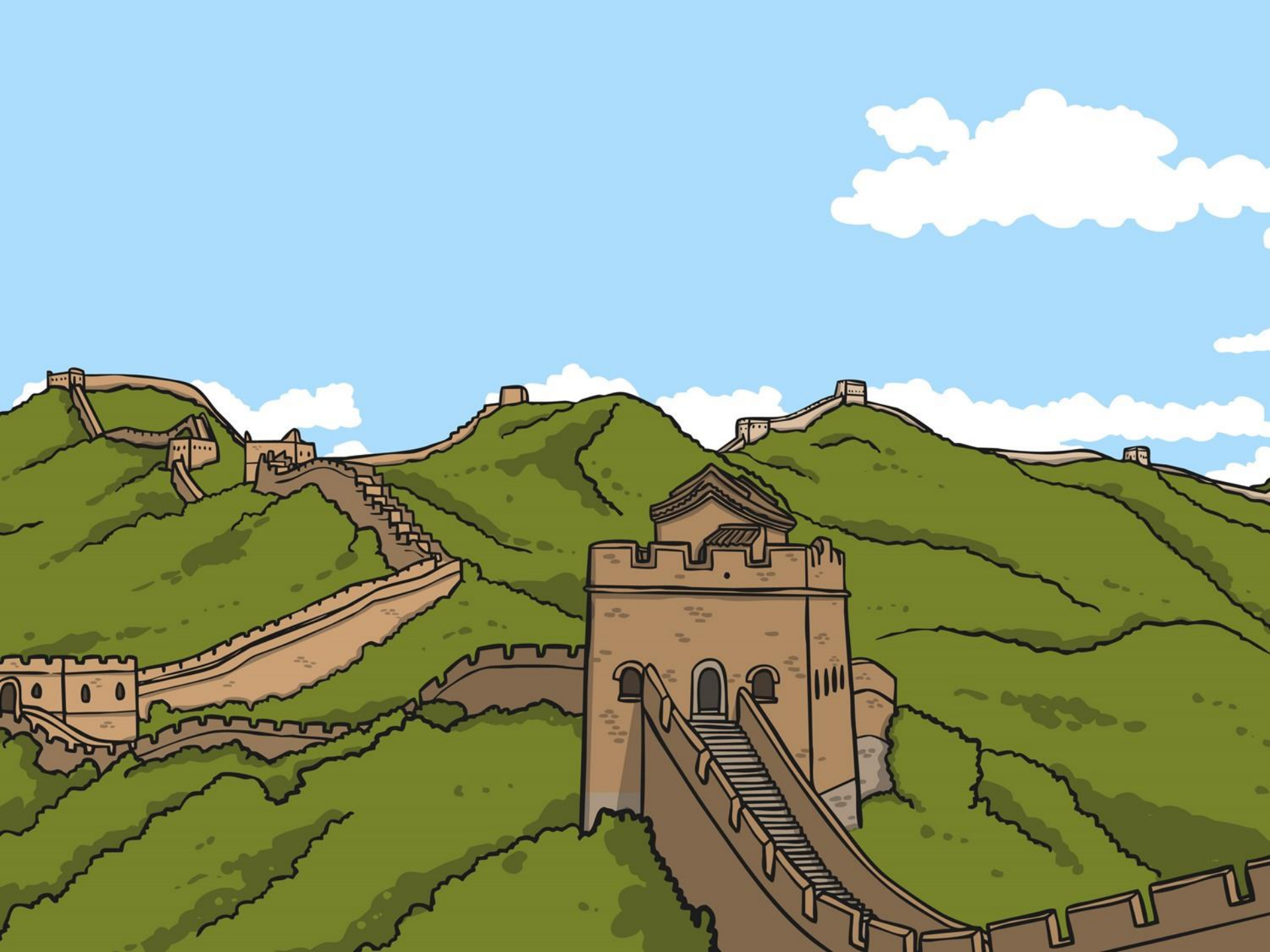




Let's Go to China

Where Is China?



Where Is China?



twinkl

Aim

- I can understand where China is in the world.
- I can locate China on a world map.

Success Criteria

- I can describe where China is located in the world.
- I can begin to tell my partner 3 things I know about China.
- I can use an atlas independently to find (locate) China on a world map.
- I can name some major cities in China.

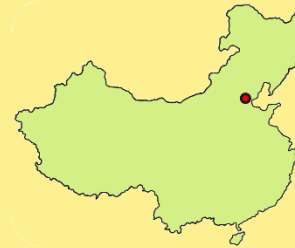
Key Words



China



Asia



Beijing



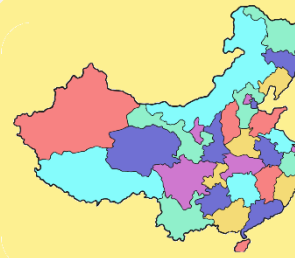
Shanghai



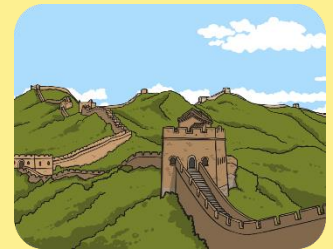
continent



country



provinces



landmarks

What Do I Know Already?



1

Can you write any 2 things you already know about China?

2

Which continent is China in?

3

Is China in the North, East, South or West of the world?

4

Can you name any places (capital city, cities, towns) in China?

What Do I Know Already?



K	W	L
What I know	What I want to know	What I have learnt

All About China

China is one of the world's biggest countries.

It is known as the **People's Republic of China** and is located in East Asia.

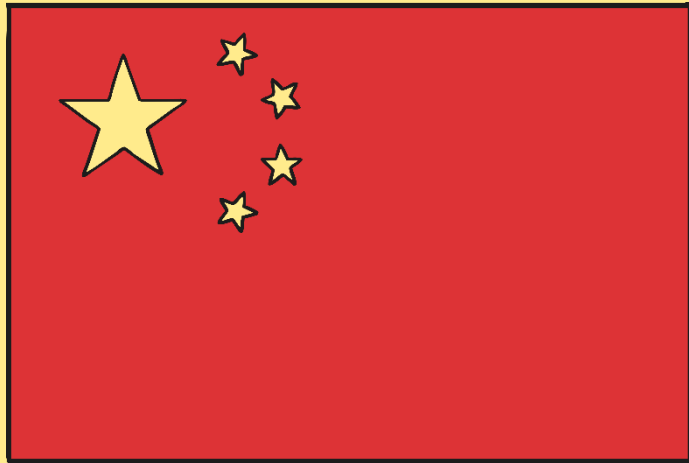
More people live in China than any other country in the world.

It has a **population** of 1.3 billion! Wow!



Photo courtesy of Michael Elleray and poeloq (@flickr.com) - granted under creative commons licence - attribution

All About China



This is China's national flag.

Is the Union Jack different or similar?

All About China



Beijing is the capital city and **Shanghai** is the largest city in China.



Photo courtesy of caitriana and showbizsuperstar (@flickr.com) - granted under creative commons licence - attribution

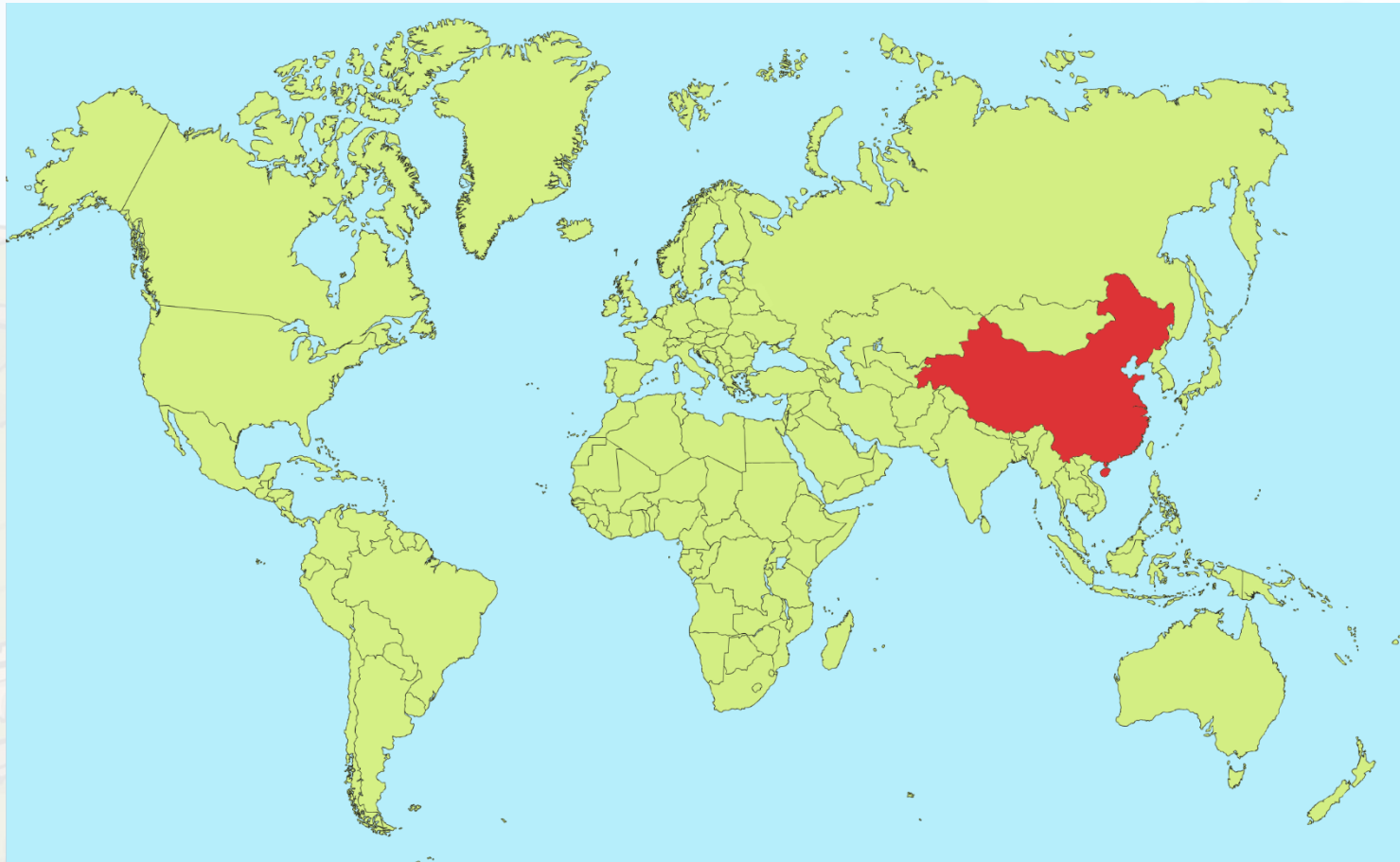
All About China



There are hundreds of rivers in China.
The **Yangtze River** is the third longest river in the world.
The **Yellow River** is the sixth longest river in the world.



Where Is China?



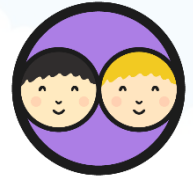
Where Is China?



Where Is China?



China Atlas Challenge



Using an atlas, find a map of China.
See how quickly you can answer these questions:

- Can you find the capital city?
- Can you find Yangtze river?
- Can you find a city in the North of China?
- Which cities are on the coast?
- Name an ocean near to China.
- Name 2 countries which border China.

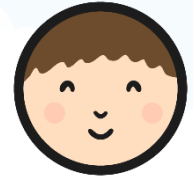
Work with your partner to
complete this quick activity.

Challenge:

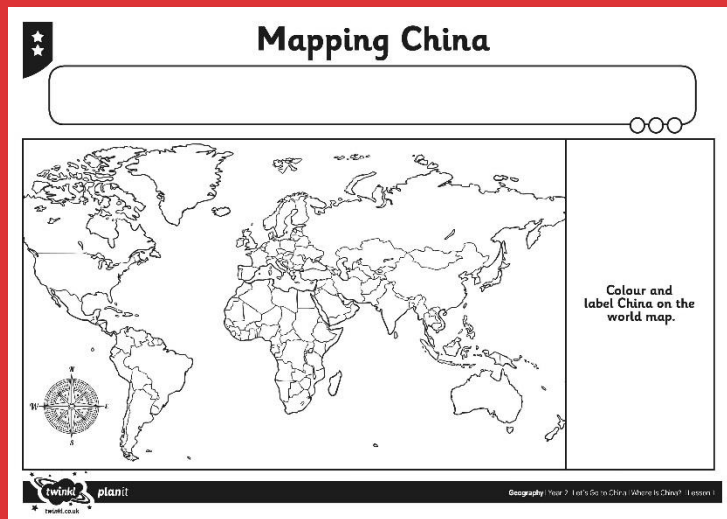
How many countries can you find
which border China?



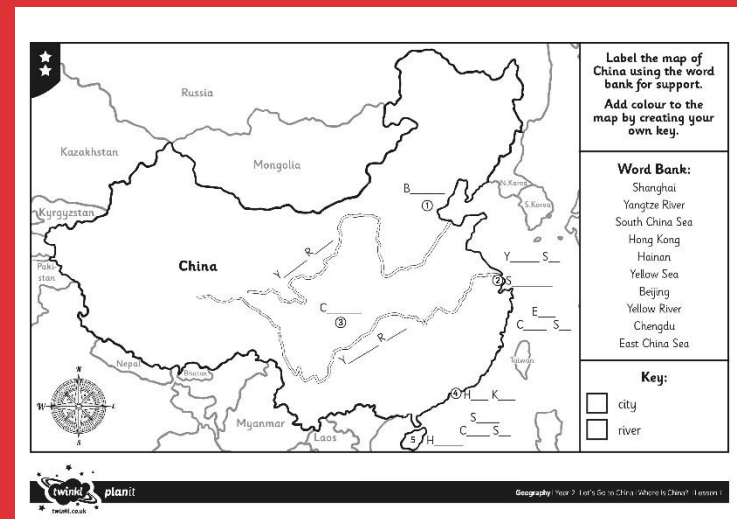
Find It



Using an atlas and your Activity Sheet:



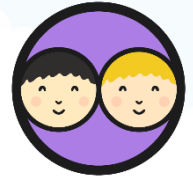
On the map of the world, label and colour China.



On the map of China, follow the instructions on your activity sheet.



Google It



Use Google Maps to look around and explore China.



What places can you find?
What do you think of them?

What oceans, seas, mountains,
rivers or landmarks can
you find?

Can you use Google Street View?
What is happening in the
photographs?

Aim



- I can understand where China is in the world.
- I can locate China on a world map.

Success Criteria

- I can describe where China is located in the world.
- I can begin to tell my partner 3 things I know about China.
- I can use an atlas independently to find (locate) China on a world map.
- I can name some major cities in China.

