

# All About Japan



twinkl

# Where In the World is Japan?

Japan is an island nation in East Asia.

This means it is made up of 6852 islands.



**The main islands are:**  
Honshu, Kyushu, Shikoku,  
Hokkaido. They are also known  
as the 'home islands'.



It takes around 13 hours to get from the U.K to Japan.



# What is the Capital City?

From 794 to 1868, the Emperor lived in Heian-kyō, which is now known as Kyoto.

After 1868, the Government of Japan and the Emperor moved to Tokyo.

The capital city of Japan is **Tokyo**. This is on the island of Honshu.

Emperor Akihito was the first emperor to retire in over 200 years.

Currently, more than 13 million people live in Tokyo.



Click on the name of the capital city to find out more.

# Some Japanese Phrases

Konnichiwa

Hello.

O-genki desu ka?

How are you?

Sumimasen

Excuse me.

Jaa ne

See you.





# Japanese Clothing

In Japan there are two types of clothing. The first is western clothing which is like the clothing you might see people wearing in many countries.

## **The second is Japanese Wear**

The kimono is traditional Japanese clothing.

Ki = to wear

Mono = object/ thing

They are made from silk and have long sleeves.

They are often worn for important festivals.

Young women wear kimonos with longer sleeves. This shows that they are not married.



# Japanese Food

Japan is famous around the world for its food, especially sushi.



Sushi is usually made of cold rice and vegetables or raw fish, sometimes wrapped in seaweed.

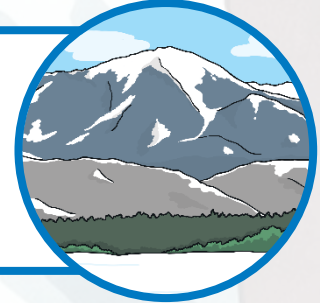
Soups are popular in Japan, as well as rice and noodle dishes.





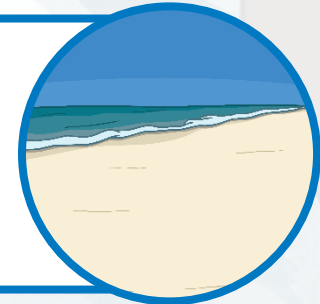
# Places to Visit in Japan

**Mount Fuji** Mount Fuji is the highest mountain in Japan. It is a dormant volcano. This means it is not active. It last erupted in 1707.



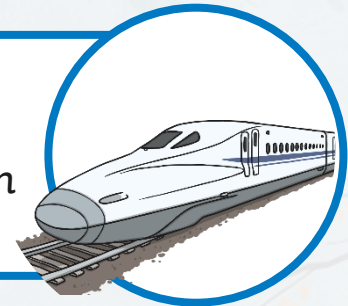
## Ring of Fire

Japan lies on the 'Ring of Fire' in the Pacific Ocean. This is where there is a group of volcanoes that have very large eruptions. In Japan there are more than 108 active volcanoes.



## Shinkansen Train

This is the high speed train in Japan. It can go as fast as 200 miles per hour. This is almost three times as fast as we can go on the motorway. It is the world's fastest passenger train.



# Mount Fuji

Mount Fuji is Japan's tallest mountain. It is 3776 metres high.

Thousands of locals and foreigners climb the mountain every year.





# Shibuya Crossing

Shibuya Crossing in Tokyo is famous because it is one of the busiest intersections in the world.

More than 250,000 people use it every day and they have just 2 minutes to make it across the road.





# Cherry Blossom



A picture of some cherry blossom trees near Mount Fuji.

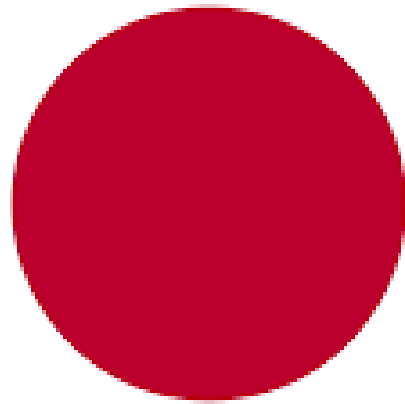
Cherry blossom is Japan's National flower.

It symbolises renewal and hope  
Picnicking beneath cherry blossom trees is a Japanese tradition. The century-old custom is known as "hanami," which means flower viewing





# Japanese Flag



# Interesting Facts

1. Japan has hosted the Olympic Games three times. It will also host it again in 2020.

2. Sumo wrestling is the national sport of Japan. Sumo wrestlers are often very large and wear their hair on the top of their head in a bun.

3. Japan is where many electronic things have been invented. Cameras, computers and cars are often produced here.

4. In Japan, people have the third longest life expectancy in the world. Men live to 81 years old and women to almost 88 years old.

Which fact do you find most interesting?





twinkl