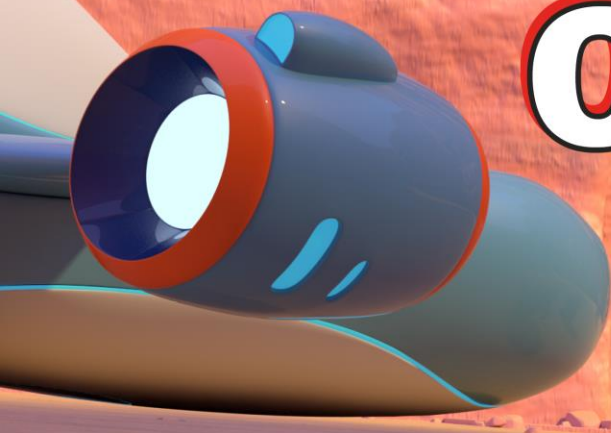


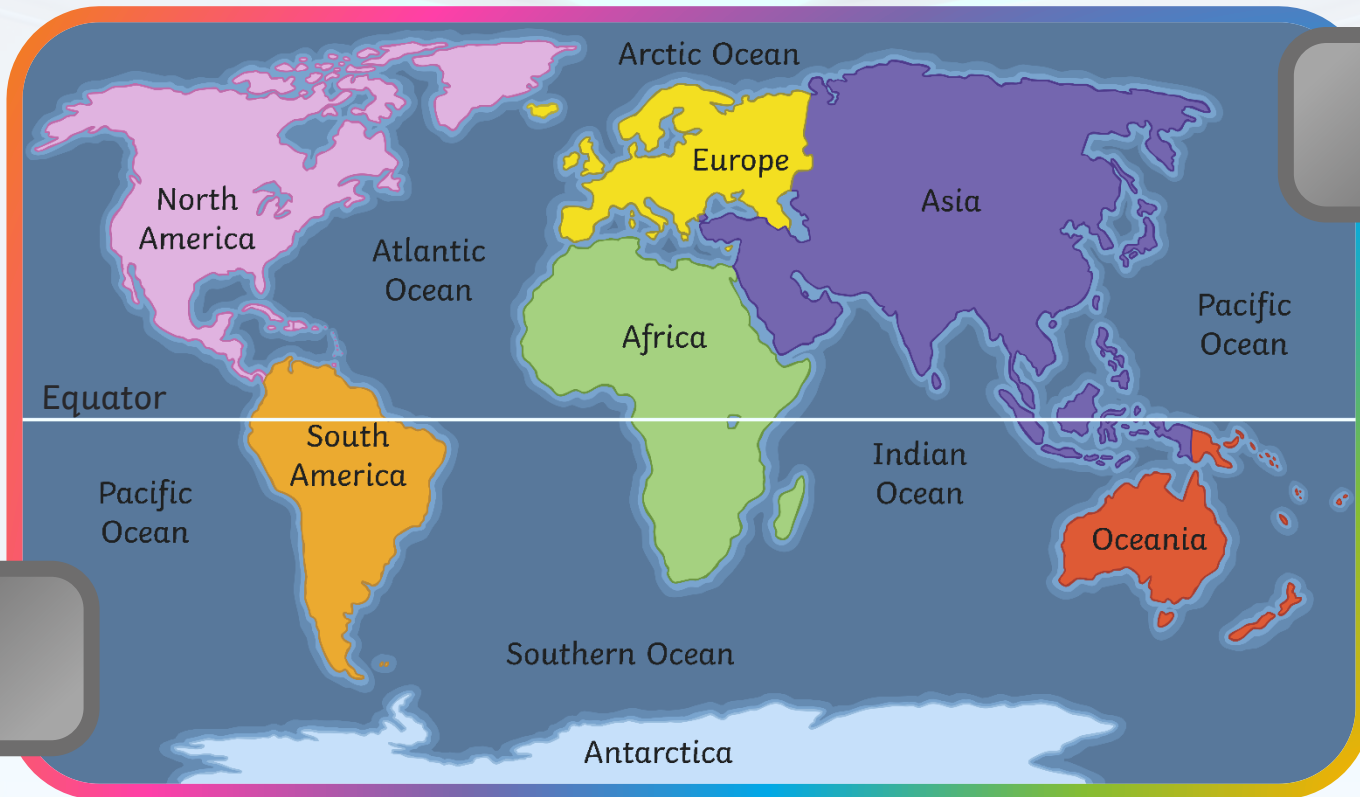


# Continent of Asia



# What Is a Continent?

Here are the seven continents of Planet Earth. A continent is a massive piece of land that is often separated from other areas of land by water or another feature such as mountains.



# Asia

Here is a map which shows the countries that are in the continent of **Asia**.





# Asia



Today, we are  
going to be  
learning about the  
continent of **Asia**.



# Asia



## Funky Fact 3:

Asia is separated from the continent of Europe by a land border and edged by three oceans: the Indian Ocean to the south, the Pacific Ocean to the east and the Arctic Ocean to the north.



# Asia



## **Funky Fact 2:**

Asia is made up of 48 countries. Some of these countries include China, India, Thailand, Vietnam and Malaysia.





# Asia



**Funky Fact 1:**  
The highest peak in Asia is  
Mount Everest.





# Asia



Did you know that  
the Tibetan name for  
Mount Everest is  
**Chomolungma?**



# What Is a Landmark?



Can you remember  
what a landmark is?

# What Is a Landmark?

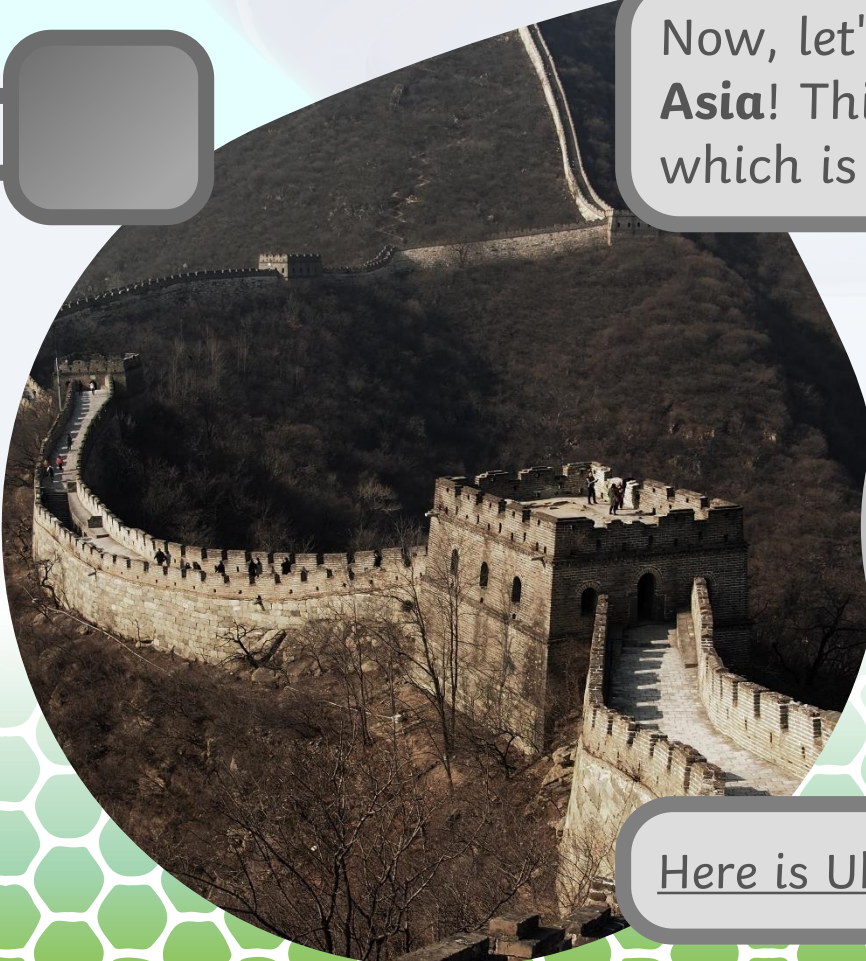
A landmark is something that stands out in an area. It could be a building, a bridge, a lake or river, a sculpture or something else. These places might be special because of their age or their size. A landmark makes a place recognisable. This means you could look at a picture of a landmark and know straight away where it is.





# The Great Wall of China

Now, let's explore the continent of **Asia**! This is the Great Wall of China, which is in China.



Here is Ubercorn with some funky facts.

# Burj Khalifa, Dubai



I love a tall building and Burj Khalifa is the tallest man-made structure in the world! It is 828 metres tall. It is also known as **the Jewel of Dubai**.



# Petra, Jordan

Petra is in Jordan. It is carved into rock.  
Here is Ubercorn to tell us more about it.



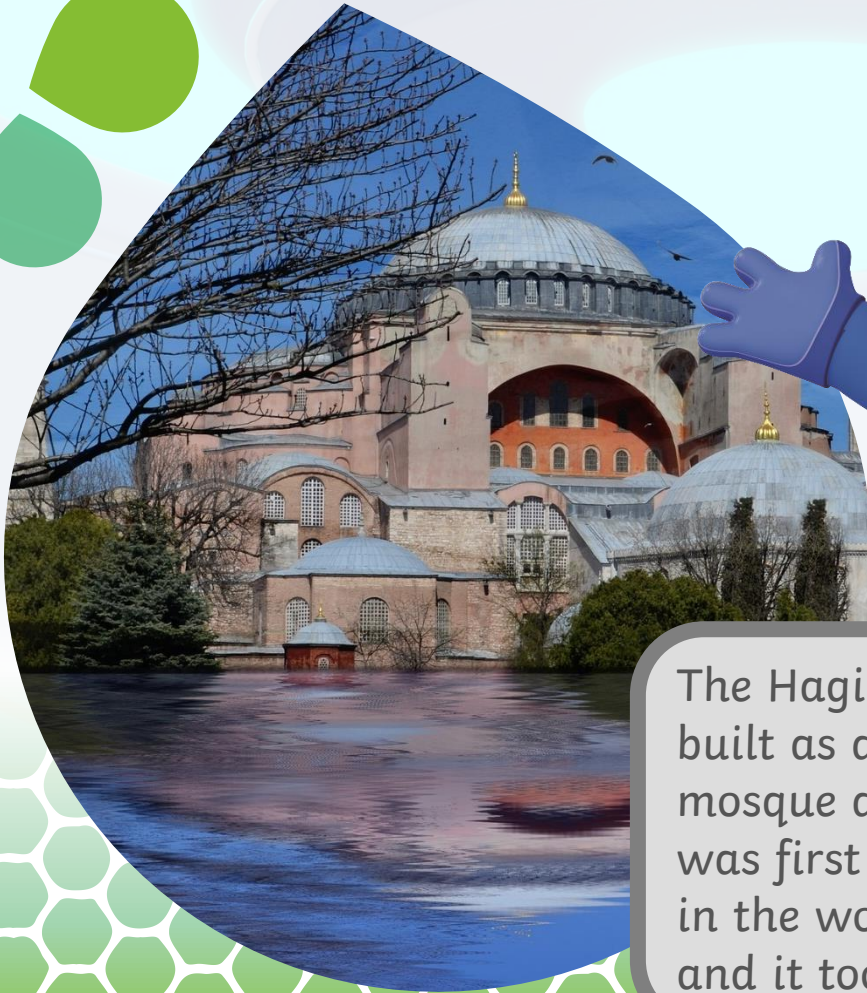


# Ha Long Bay, Vietnam

Look at Ha Long Bay in Vietnam. It is a beautiful bay with many islands and cliffs made from limestone and covered in different types of plants. The wind and waves have made these unusual looking islands over many years. **Souvenir selfie!**



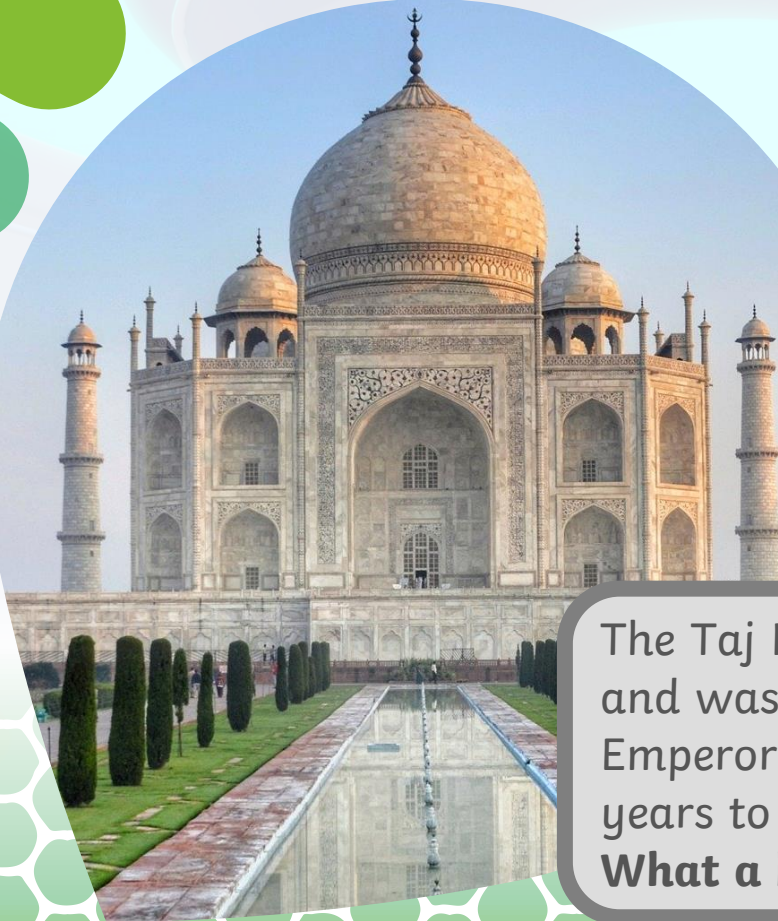
# Hagia Sophia Museum, Turkey



The Hagia Sophia Museum was originally built as a church, then it became a mosque and now it is a museum. When it was first built, the church was the biggest in the world for over a thousand years and it took 11 thousand people to build it!



# The Taj Mahal, India



The Taj Mahal is made of white marble and was built in memory of the Mughal Emperor Shah Jahan's wife. It took 16 years to build and is over 300 years old!  
**What a building!**



# Dead Sea

The Dead Sea is actually a lake in Asia.  
Let's find out more from Ubercorn's top three funky facts.



# Osaka Castle, Japan



In 1583, the beautiful Osaka Castle was built where a special temple had once been, but it burnt down during a war 16 years later. It was rebuilt but it has been struck by lightning and burnt down again since then!



# Turtle Rock, Mongolia



Turtle Rock in Mongolia is also known as Melkhi Khad. It is formed from granite and is 24 metres high. That's almost the same height of 6 double decker buses! It is called Turtle Rock because its shape reminds people of a turtle. **Awesome!**



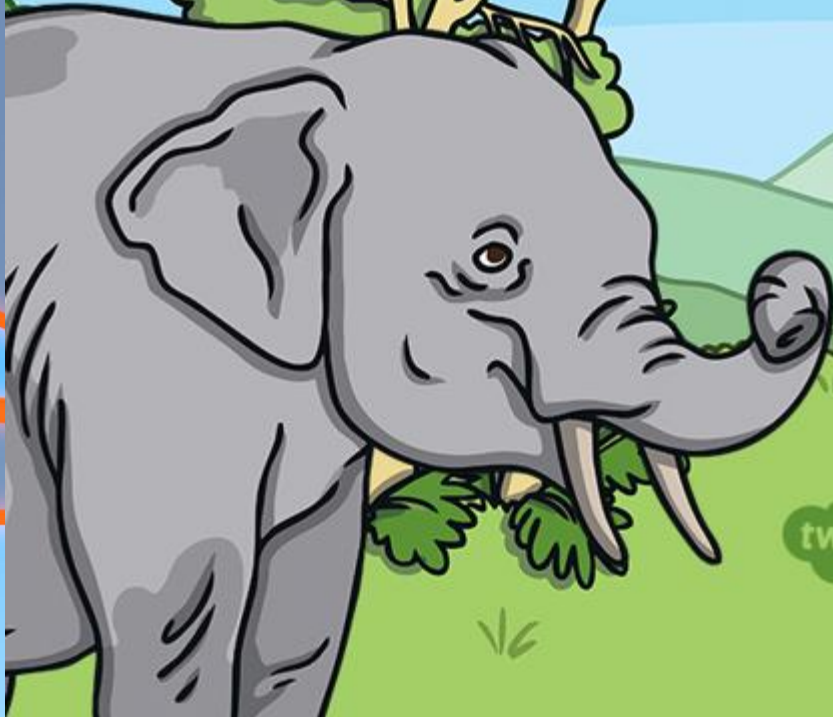
# Banaue Rice Terraces, Philippines



The Banaue Rice Terraces were created by people, by hand, over 2000 years ago. They were made so that rice could be grown on them and the people could sell the rice to passing traders.

All About

# Asian Animals



twinkl





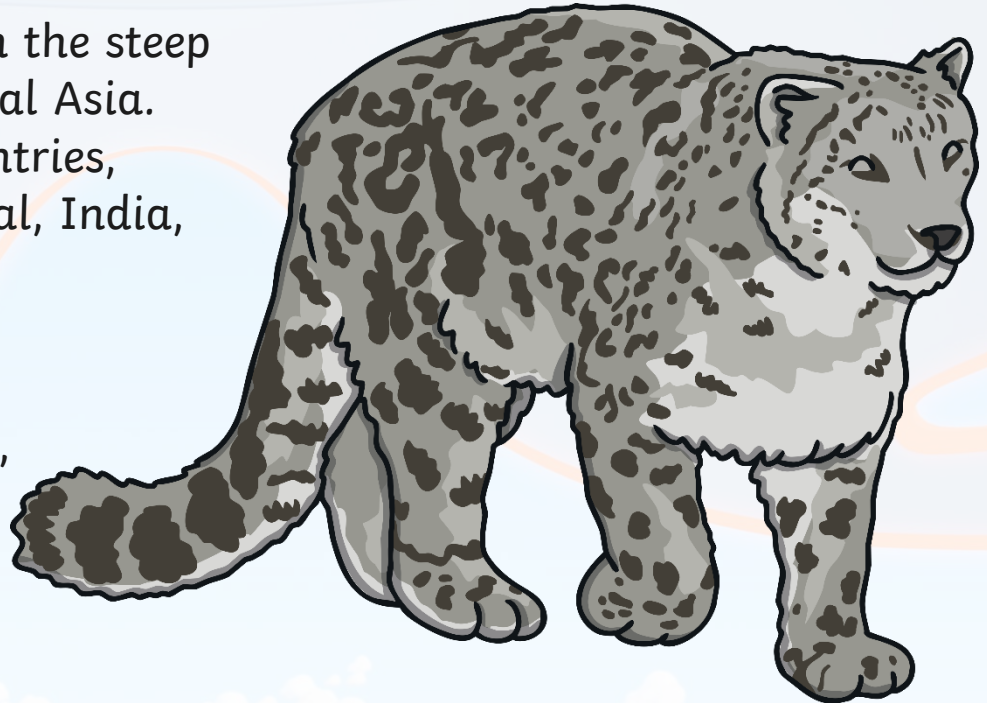
# Snow Leopard

The **snow leopard** is a type of leopard.

**Appearance:** Snow leopards have white-grey fur with large black rosettes.

**Habitat:** Snow leopards live in the steep and rocky mountains of Central Asia. They are also found in 12 countries, including China, Bhutan, Nepal, India, Pakistan, Afghanistan, Russia and Mongolia.

**Diet:** Snow leopards eat sheep, marmots and hares.





# Giant Panda

The **giant panda** belongs to the bear family.

**Appearance:** Giant pandas have black and white fur and black eyepatches.

**Habitat:** Giant pandas are only found in China. They live in the mountains, which are cool and wet. Pandas like to be on their own and like to have their own space. They make their dens out of tree stumps or hollowed-out logs.

**Diet:** Giant pandas eat a plant called **bamboo**. Bamboo doesn't have many nutrients in it. This means it doesn't give pandas much energy so they have to eat lots of bamboo shoots to stay healthy.



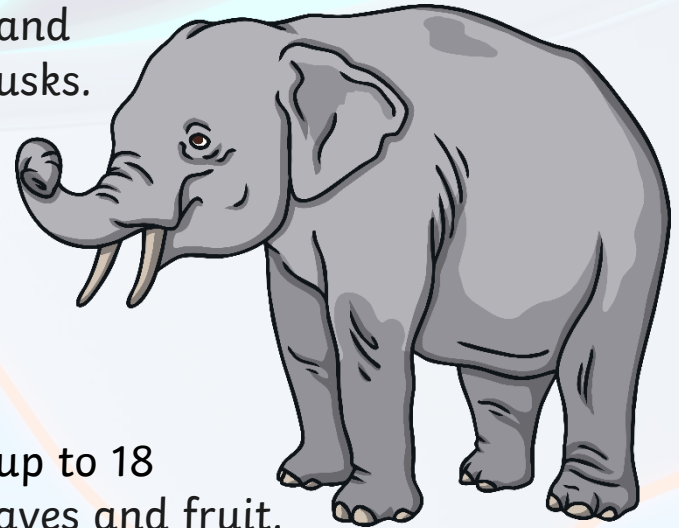
# Asian Elephant

**Asian elephants** are the biggest land mammals on the continent of Asia.

**Appearance:** Asian elephants have large bodies and a long trunk. Only male Asian elephants grow tusks.

**Habitat:** Asian elephants live in different climates. They can live in dry or wet forest and grasslands. Asian elephants live in 13 countries across South and Southeast Asia.

**Diet:** Asian elephants eat plants and can spend up to 18 hours a day eating. They eat tree bark, roots, leaves and fruit.



**Did You Know...?**

Asian elephants use their trunks to do lots of different things, such as picking up objects, greeting other elephants, trumpeting a warning sound and sucking up water for drinking or bathing.

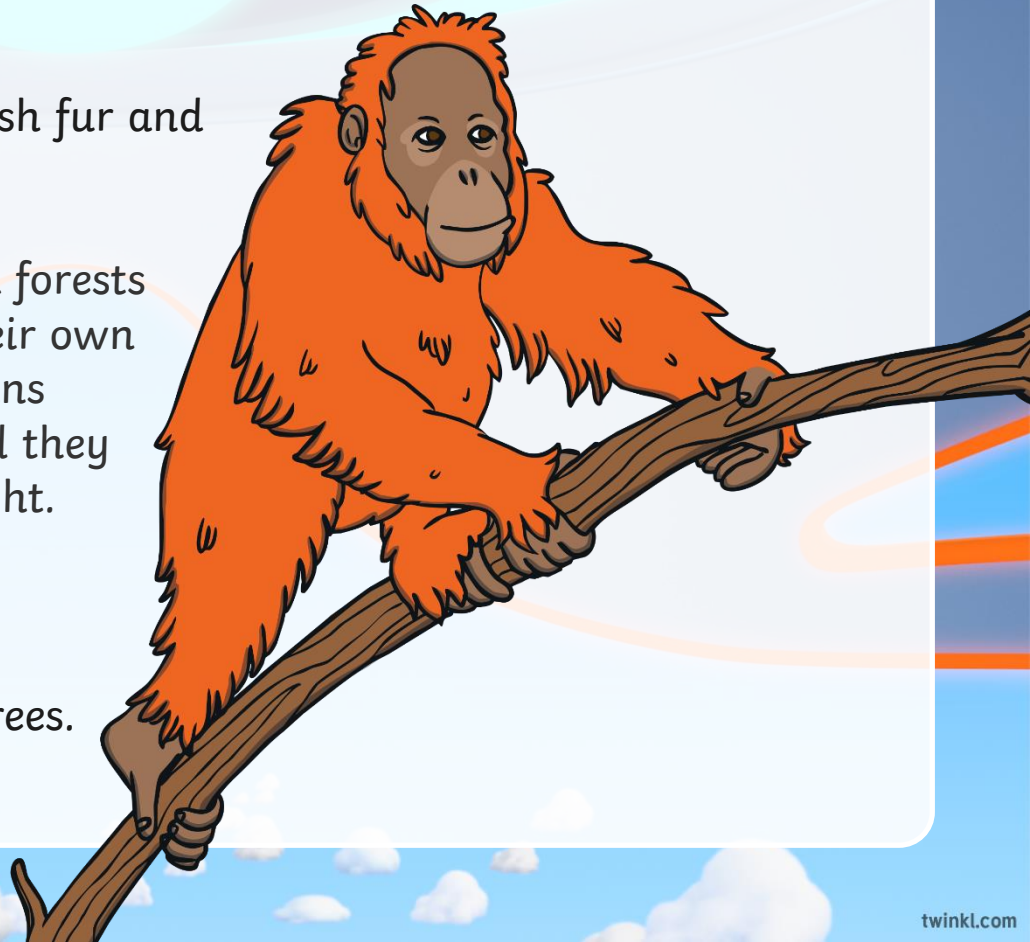
# Orangutan

**Orangutans** are the world's largest arboreal mammals. Arboreal means that they eat, sleep and play in trees.

**Appearance:** Orangutans have reddish fur and long powerful arms.

**Habitat:** Orangutans live in lowland forests in Asia. Orangutans like to be on their own and have their own space. Orangutans spend most of their time in trees and they make nests in trees to sleep in at night.

**Diet:** Orangutans eat wild fruits, such as lychees, mangosteens, and figs and drink water from holes in trees.





# Tiger

**Appearance:** Tigers have orange fur coats with black vertical stripes. They have a lighter underside.

**Habitat:** Tigers are found all over Asia and live in India, Nepal, Bhutan, Russia, Myanmar, Malaysia, Sumatra and China. They live in tropical rainforests, evergreen forests, temperate forests, mangrove swamps, grasslands, and savannahs.

**Diet:** Tigers hunt for food and eat deer and wild boar.



# Komodo Dragon

**Komodo dragons** are the heaviest lizards on Earth.

**Appearance:** Komodo dragons have flat, long heads with rounded snouts, scaly skin, bowed legs, and large, muscular tails.

**Habitat:** Komodo dragons have lived in Indonesia for millions of years. They are found on the Komodo island and some of the other Lesser Sunda Islands.

These islands have hot temperatures and are mainly dry forests with patches of rainforests.



